



Grid Player

Getting started

Smartbox

For support, video tutorials, webinars and further information visit us at www.thinksmartbox.com

Welcome to



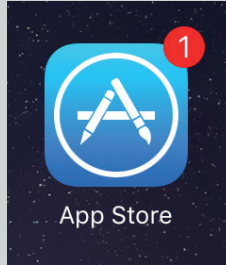
Grid Player

Grid Player is an Augmentative and Alternative Communication (AAC) App for iOS that helps people who cannot speak or who have unclear speech to communicate.

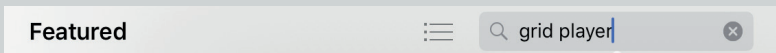
You can create or edit grids using Grid 3 and The Grid 2 for use with Grid Player. You can also use the grids included with Grid Player without any additional software.

Installing Grid Player

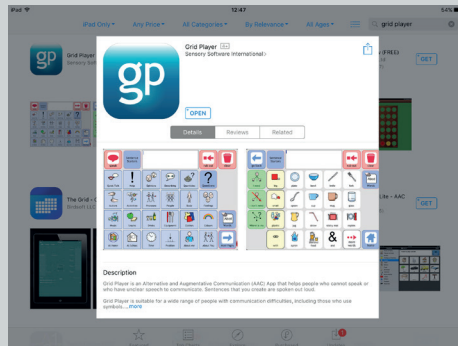
To install Grid Player on your iOS device, open the App Store.



In the search box, type 'Grid Player'.



Click on 'Get' to download Grid Player to your device.

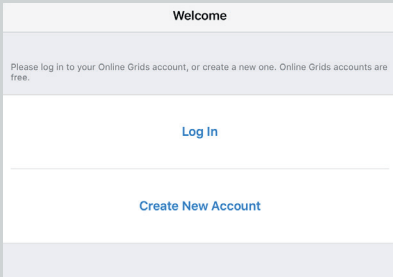


The Grid Player app will be added to your home screen. Tapping on the app icon will open Grid Player.

Signing into Grid Player



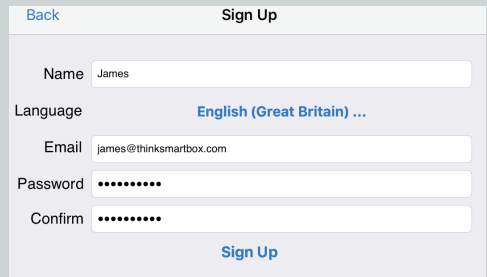
When Grid Player opens for the first time you will be presented with the welcome screen. Your device will need to be online to log in and download your grid sets.



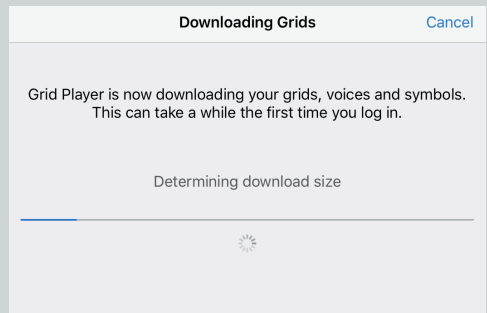
If you already have a Smartbox account, tap **Log In** and enter your email address and password.

For new users you will need to tap **Create New Account**.

Give your account a name, specify language. Then input email address and a password.

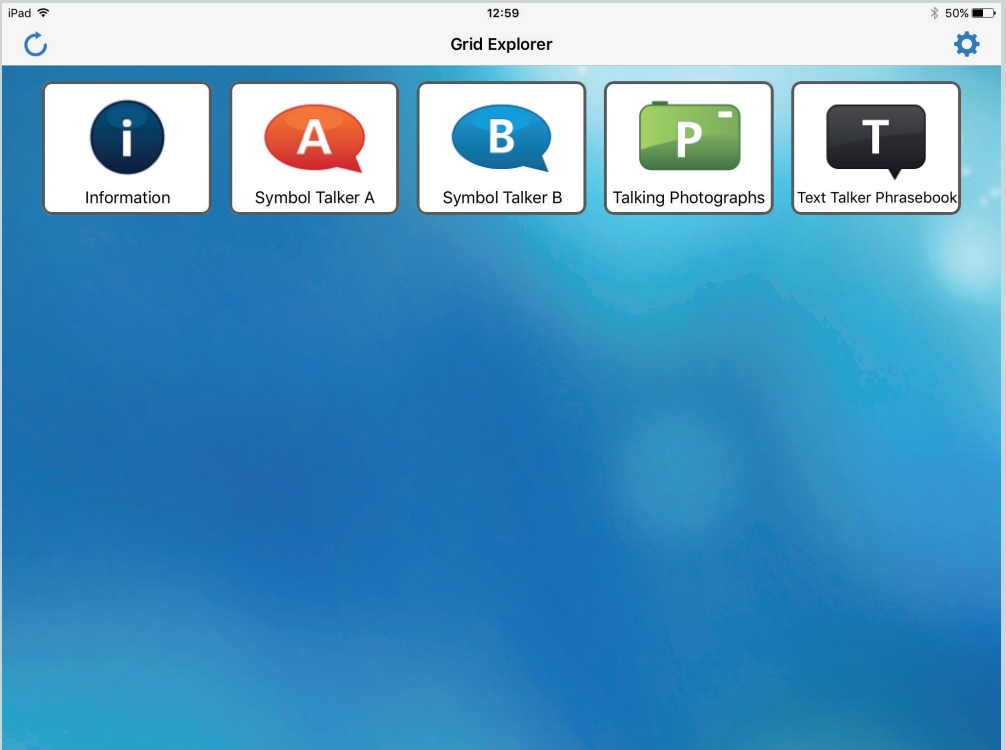


Once you have logged in, Grid Player will download and sync your grid sets. This may take a few minutes to complete depending on your internet connection.



Grid Explorer

Once you have logged in and downloaded your grid sets, Grid Player will open Grid Explorer. This will be your home page, where you find all of your grid sets. From here you can launch a grid set, refresh your grid set library, access the Settings menu and learn more about Grid Player and AAC.



Grid Player has four grid sets to explore and use, along with any grid sets you have created in Grid 3 or The Grid 2.

To open a grid set simply tap it.

Returning to Grid Explorer



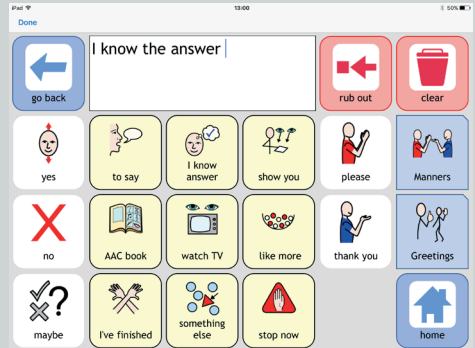
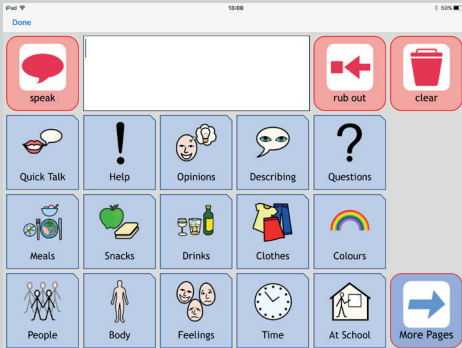
To close a grid set, tap **Done** in the top left of the screen. You will be taken back to Grid Explorer.



Grid sets

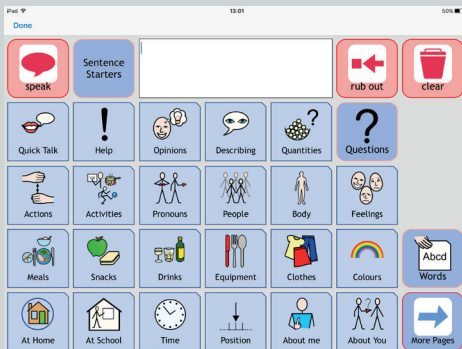
Grid Player includes four communication grid sets.

Symbol Talker A



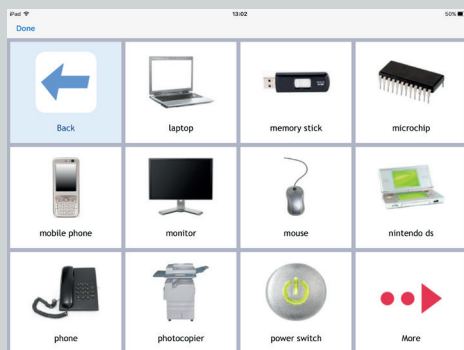
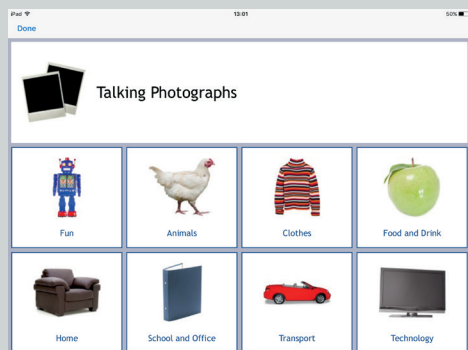
Symbol Talker A is designed for somebody starting off with alternative communication. Words are organised by topic. On each topic grid you can build simple sentences from one or two selections.

Symbol Talker B



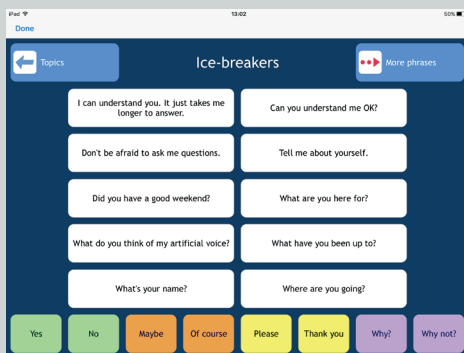
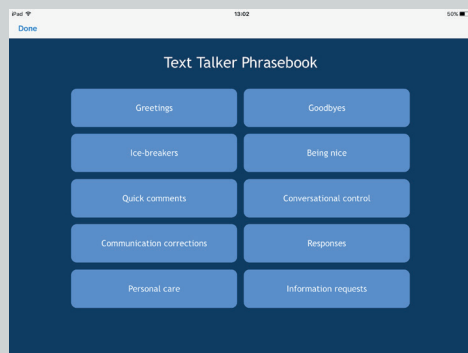
Symbol Talker B builds on the language and access skills that have been established and provides vocabulary to build sentences from up to three selections.

Talking Photographs



Talking Photographs is a set of images covering a broad range of subjects. These can be used to talk about the things around you, play games and more.

Text Talker Phrasebook



Text Talker Phrasebook provides ready-made phrases for fast communication for people who are literate but are unable speak. There are also quick-response buttons on every grid for one word answers to questions.

Adding and changing grids

To add or edit grid sets for Grid Player, you can use either Grid 3 or The Grid 2 on your PC.

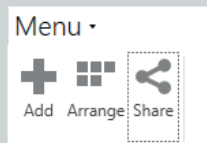
★ Tip

You can find out more about Grid 3, our flagship communication software at www.thinksmartbox.com/grid3

By signing into your Smartbox account in Grid 3 or The Grid 2 you can access Online Grids where you can download hundreds of grids which can be sent to Grid Player.

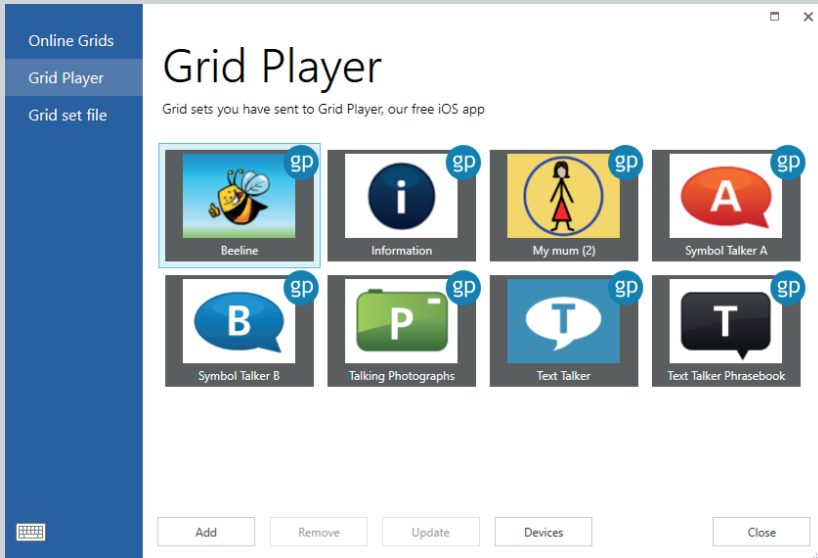
Grid 3

To add a grid set from Grid 3, open the menu (F10) and click on **Share**.

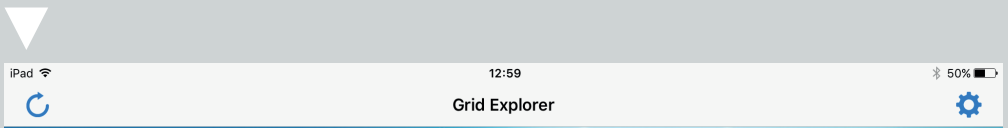
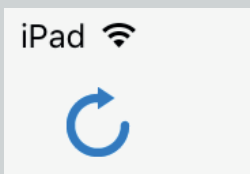


Select **Grid Player**. You will see all of the grid sets that you currently have installed. Click **Add**.

Select the grid set you would like to add to Grid Player and click **Next**.



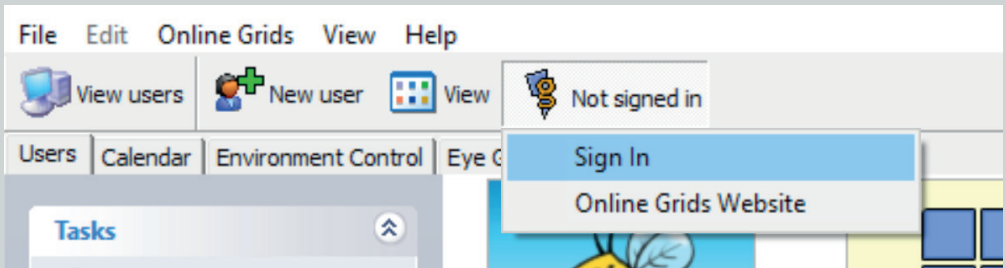
The grid set will now be uploaded. To see your grid set in Grid Player, tap the refresh icon in the top left to sync.



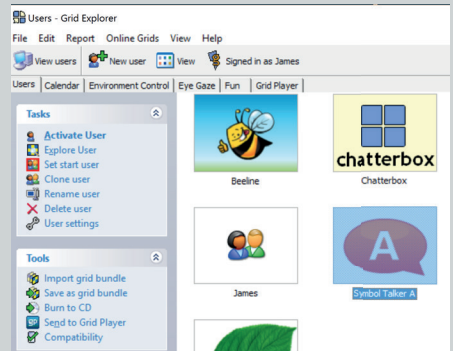
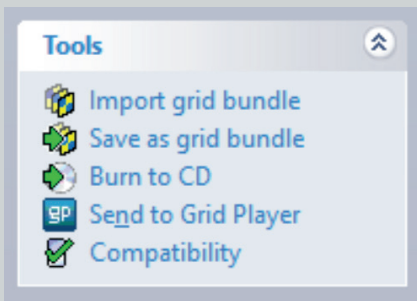
Adding and changing grids

The Grid 2

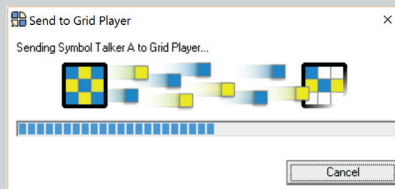
To send a grid set to Grid Player in The Grid 2 you need to sign into Online Grids. Click **Sign In** to Online Grids on the top toolbar.



Select a grid set then click **Send to Grid Player** from the sidebar.



A window will open for you to check the progress of the transfer. Once complete, refresh Grid Player and your grid sets will download.



Some features of Grid 3 and The Grid 2 are not available in Grid Player.

Available commands

The commands available in Grid Player are:

- **Type** – add a letter, word or sentence to the sentence bar
- **Clear** – clear the sentence bar
- **Speak** – speak the text in the sentence bar
- **Jump to** – open another grid
- **Jump back** – go back to the previous grid
- **Jump home** – go to the home grid
- **More auto content** – show more word list items
- **Copy to clipboard** – copy the text in the sentence bar

Available features

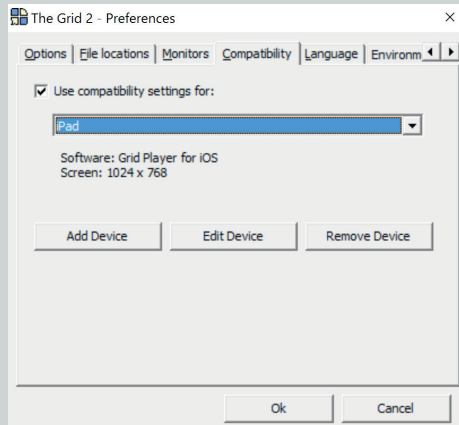
The grid set features available in Grid Player are:

- **Word list auto content** – for grids with lots of words
- **Prediction auto content** – suggest words as you type
- **Self-closing grids** – grids that jump back after you select a cell

The Grid 2 Compatibility mode

Users of The Grid 2 can use compatibility mode to make sure grid sets will work with Grid Player.

Select Compatibility from Grid Explorer in The Grid 2, and select which device you want to use for compatibility mode. If you want to set the window to the same size as your device, select the option from the Monitors tab.



In compatibility mode, The Grid 2 will only use features that are supported in Grid Player. When you edit, you will only see commands and other features that are available for Grid Player.

Compatibility report

The compatibility report lists all the features of a grid set that are not compatible with Grid Player. Select Reports > Compatibility Report from the menu to see the report.

Settings



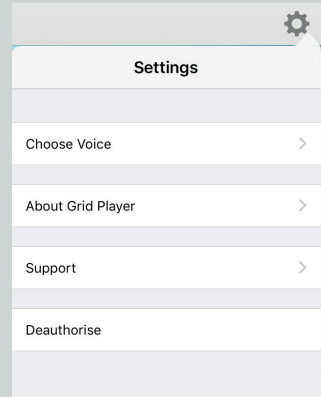
To access Grid Player's settings, tap the cog symbol in the top right of the Grid Explorer screen.

Choose voice

Depending on the language of your account, you will have one or two voices available to choose from.

About

Under the about option your can see version details and use the **Send Feedback** option to contact Smartbox.



Support

This tab details your current login information, iPad information and the date of the last refresh. There are options to **Refresh** which looks for any new or updated grid sets. **Refresh All** will re-download all grid sets and voices. **Email Support** is a direct address to our Smart Support team and **Report a Problem** is a quick tool for reporting any bugs or issues.

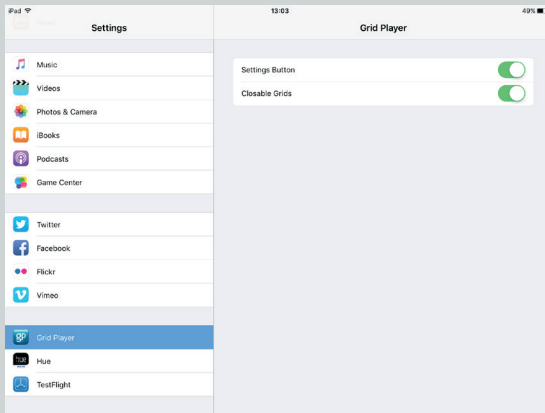
Deauthorise

Deauthorise will remove all account information from your iPad and remove it from your Smartbox account. You can log back in at any time to reauthorise the device.

iOS Settings

There are further Grid Player security settings found within the iOS Settings app.

Open **Settings** from your iOS home screen and scroll the left hand menu down until you see Grid Player.



There are two options available.

Settings Button

Turn the settings button on and off to prevent Grid Player settings being changed from within the app.

Closable Grids

Toggle if grids can be closed to prevent the user returning to Grid Explorer.

Note that you will need to use the iOS home button on your device to exit Grid Player and re-enable closing grids to access Grid Explorer.

VoiceOver and Switches

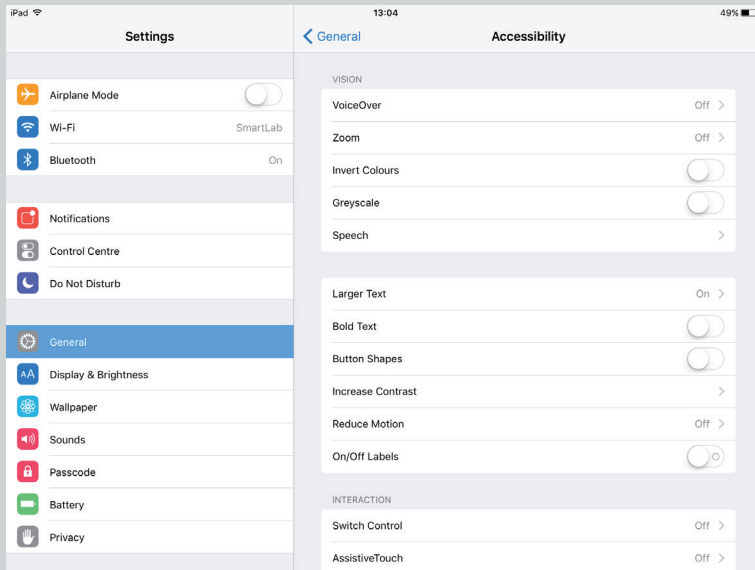


When VoiceOver is turned on, Grid Player will speak menu items when they are selected.

To access the VoiceOver settings, open the Settings app from your iOS home screen and select General then select Accessibility.

From here you can tap on VoiceOver and adjust its properties to suit your needs.

When active you will need to double-tap anywhere on the screen to activate the most recently spoken item.



To activate switch control of Grid Player tap Switch Control to 'on' under the Interaction settings. This enables scanning of both Grid Player and iOS in general.

Online Grids

The Online Grids website grids.sensorysoftware.com allows you to manage your Smartbox account.

Enter your username (email address) and password to log in to the site. You can see the devices that are connected with your account on your profile page.

Select a device to see your grid sets. You can also delete grid sets from your account.

Some grid sets require a licence to be activated for a device before they can be used.

How do I use paid-for content on Grid Player

- You cannot use paid-for symbols or grid sets with Grid Player. However, you can use the Widgit and SymbolStix symbols, Snaps photos and a wide range of free grid sets with Grid Player.

How do I delete a grid set that I have sent to Grid Player?

- Sign in to the Online Grids website with your username and password. Select the grid set you wish to remove, and click the Delete button.

How do I remove a device from my account?

- To remove a device you need to deauthorise Grid Player on that device and sign in with a different username.

What are the limits on my Online Grids account?

- You can connect up to three devices to your account.
- You can upload up to 10 grid sets to your account.
- Each grid set can contain up to 350 grids. The total size of the grid set must not exceed 100mb, and no file may be larger than 10mb.

Audio issues

Check the device mute button. This is the small slide switch on the side of the device, next to the volume icons. If you can see the orange dot on the slide side switch, mute is turned on, so slide the switch to turn off.

If your device does not have a side switch, open the Control Centre by swiping up from the bottom of the display. Press the mute icon to unmute the device, and ensure that the volume is turned up.

www.thinksmartbox.com

Smartbox